

 RADFORD REVIVAL

MA100

Mono power amplifier

改善

Kaizen Series



Introducing the MA100

The MA100 'Kaizen' amplifier is a novel and all-new design that combines the pleasing characteristics of valve amplification with the desirable technical performance and user-friendly operation of solid-state amplifiers.

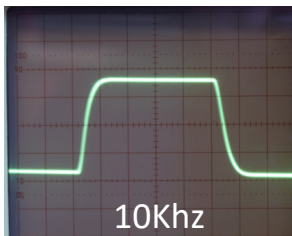


Valve Output Stage with Precision Bias Servo

Employing a valve output stage with a bespoke, UK made output transformer, the built in precision bias servo allows KT88s, KT90s, KT120s and KT150s to be used with no user adjustment. The servo compensates for valve wear and all other variables, allowing for optimal operating conditions at all times.



Low noise and distortion DC coupled driver circuitry



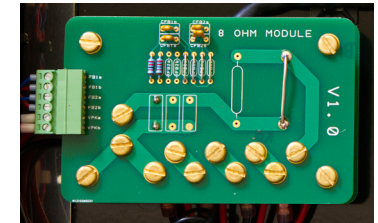
The fully differential, low distortion solid state driver circuitry is DC coupled throughout to eliminate all forms of 'blocking' distortion and other audible phenomena that plague most valve amplifiers used near their limits. The ultra low noise input circuitry ensures no distracting background hiss. Careful design allows for clean transient response.

Uniquely high damping factor and bass control

The high degree of loop gain afforded by the novel circuitry allows an unusually high damping factor for a valve amplifier. The DC coupling allows the damping factor to stay constant to near DC - despite the output stage being transformer coupled. This allows bass control as good as or better than most solid state amplifiers.

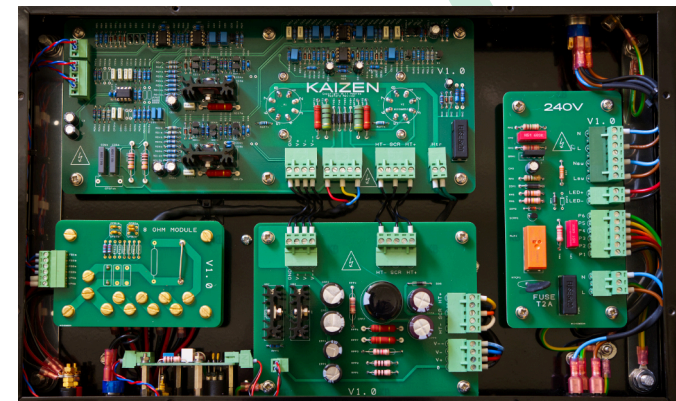
Easy matching into 8, 4 and 2 ohm loads

A clever user replaceable module optimally re-configures the highly sophisticated output transformer to match into 8, 4, and 2 ohm loads. Unlike most valve amplifiers, the entire output transformer secondary is used for every setting, ensuring all work equally well.



Ease of use - set and forget

The aforementioned features enable a truly trouble free experience. The high damping factor and range of impedance matching allows all speakers to be used, the bias servo eliminates all worry of manual adjustments and valve wear. A highly modular design allows for easy servicing should the need arise. High quality custom UK wound transformers ensure a long service life.



Specifications

Power Output	Sine RMS	100W
Distortion	100W, 1KHz	0.02%
Distortion	1W, 1KHz	0.002%
Output Impedance	8Ω setting, 100Hz	0.035Ω
Damping Factor		> 200
Noise		< 20μV RMS unweighted
Frequency Response	-3dB Internal infrasonic filter	15Hz - 45KHz
Inputs		Balanced / Unbalanced
Output		4mm Banana plugs std ¼" spacing
Weight		20Kg
Dimensions	W x H x D (mm)	440 x 240 x 280



Made in England

Contact

www.radfordrevival.co.uk
info@radfordrevival.co.uk
+44 7874241352